

## ROOM FINISH SCHEDULE

ROOM NO.	ROOM NAME	FLOOR			NORTH WALL		EAST WALL		SOUTH WALL		WEST WALL		CEILING			
		MAT	FINISH	BASE	MATERIAL	FINISH	MATERIAL	FINISH	MATERIAL	FINISH	MATERIAL	FINISH	MATERIAL	FINISH	HEIGHT	REMARKS
101	STORAGE	CONC	SEALANT	NA	PLY'WD	PT	PLY'WD	PT	PLY'WD	PT	PLY'WD	PT	WD	PT	VARIES	SEE NOTES
102	GROWING RM	PAVERS	NA	NA	PLY'WD	PT	PLY'WD	PT	GLAZING	NA	PLY'WD	PT	WD	PT	VARIES	SEE NOTES

### AIR CIRCULATION SYSTEM NOTES:

1. 8" dia. double wall interior perforated drain tile with appropriate tee connectors and end caps.
2. 8" black stove pipe to overhead hot air intake.
3. 8" vertical ABS piping.
4. 8" inline variable-speed centrifugal duct fan.
5. Exhaust Manifold: 4" Dia perforated ABS drain tile.
6. 8" Dia black stove pipe open at both ends for hot air intake.
7. 8" black stove pipe hot air riser.
8. Excavate interior of Growing Room and install 1.5" washed river rock thermal mass.

### Air Circulation Specifications:

#### Thermal Mass Piping:

#### Interior Perforated drainlines:

Mfg. Prinsco

Model Piping: "Goldflow" GTF20NP

Duct Tees: GFT0808

End Caps: EC08-GF

#### Intake Ducting:

Black stove pipe: 8" diameter

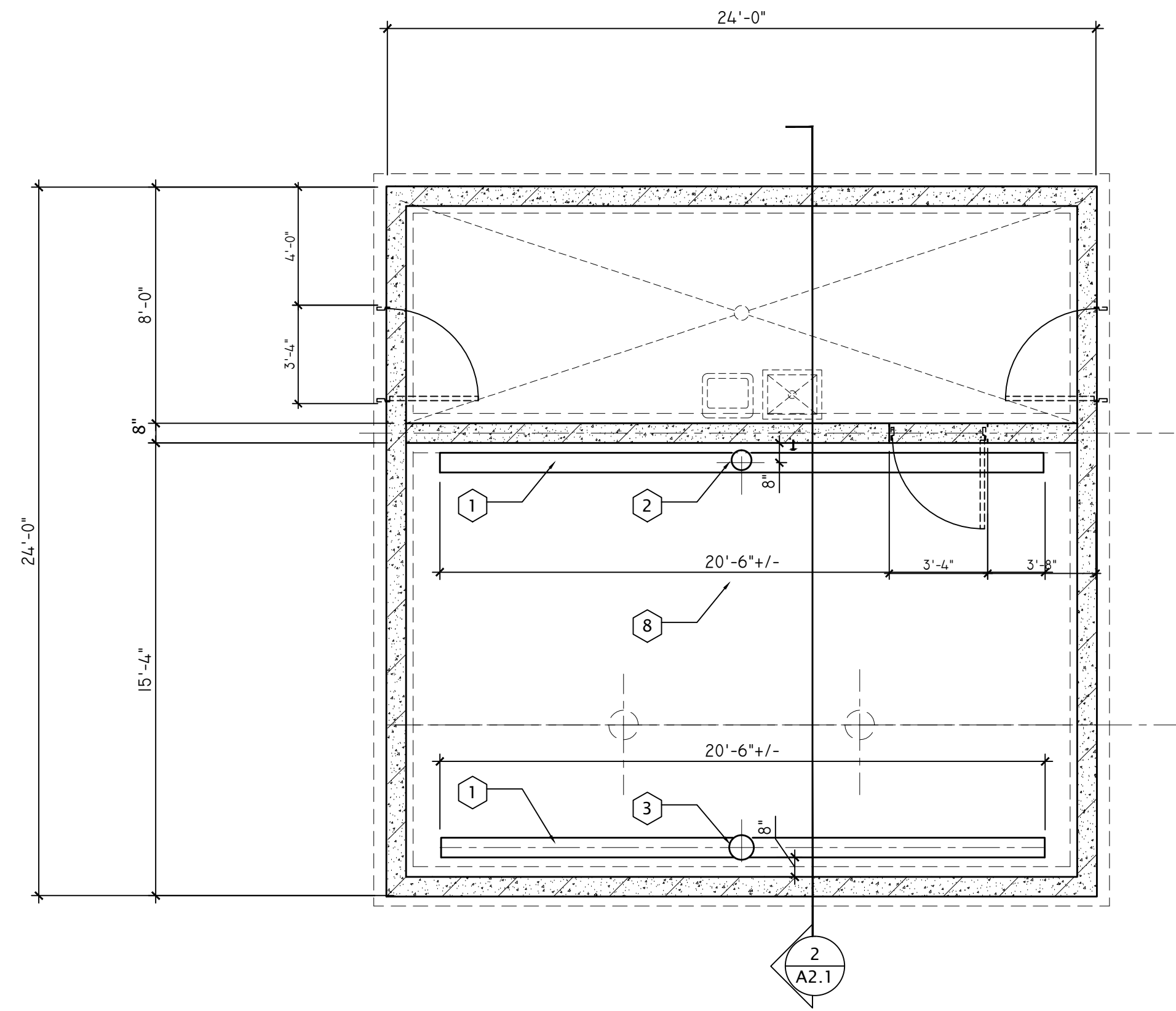
#### Exhaust Manifold:

4" ABS perforated piping:

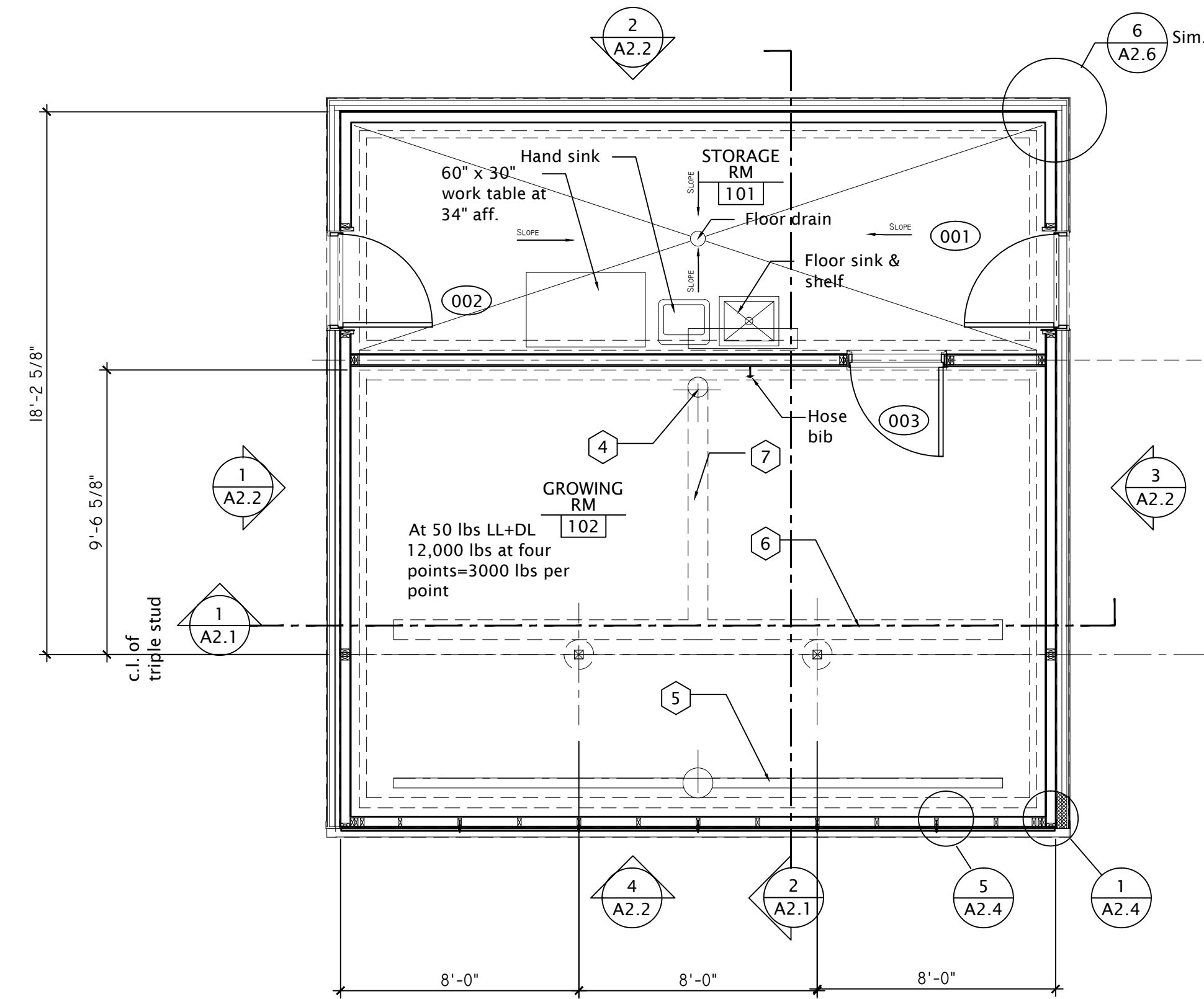
Thermal Mass: 1½" washed river rock.

#### Centrifugal duct fan:

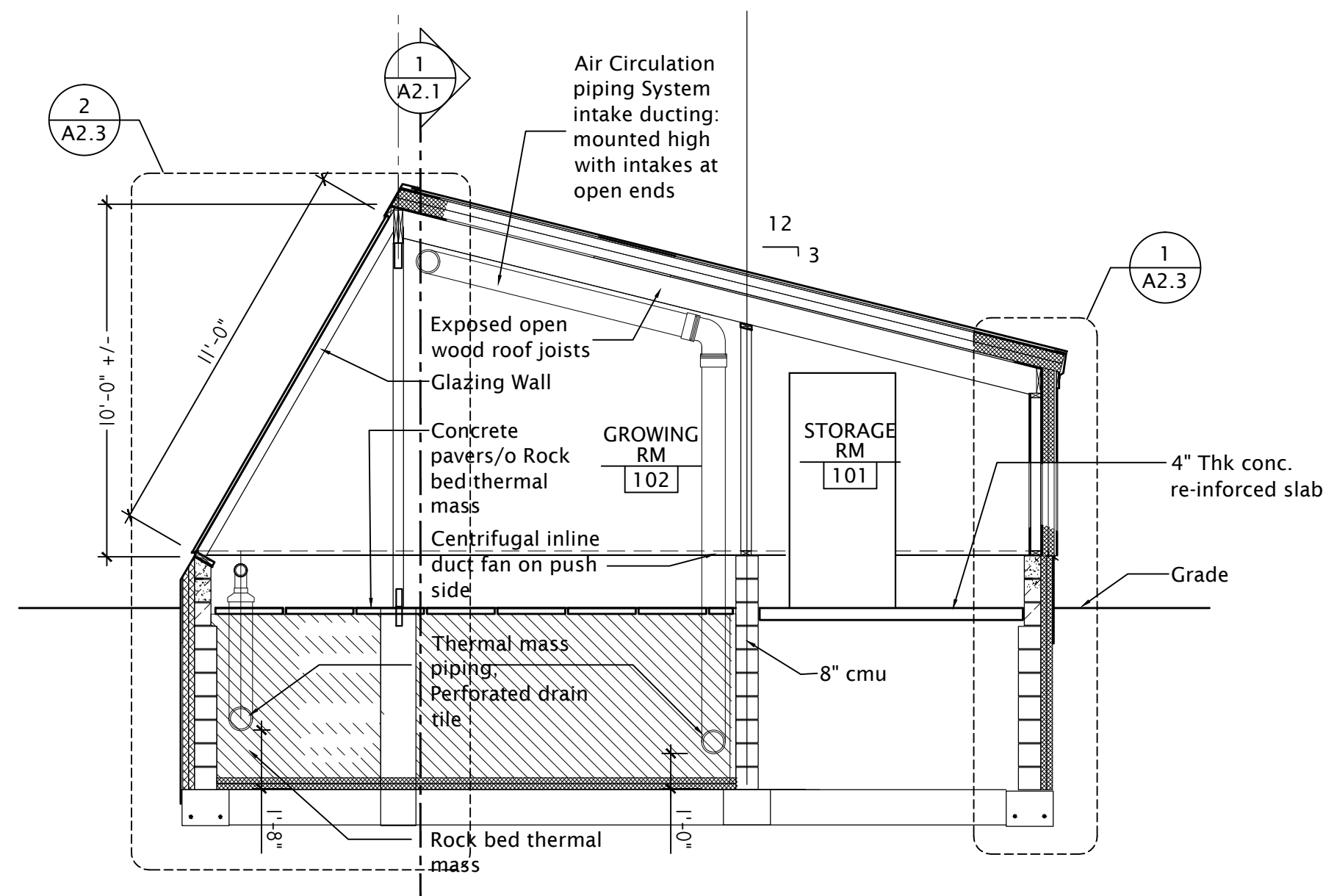
Growers Supply CF1410 by Fantech FR200.



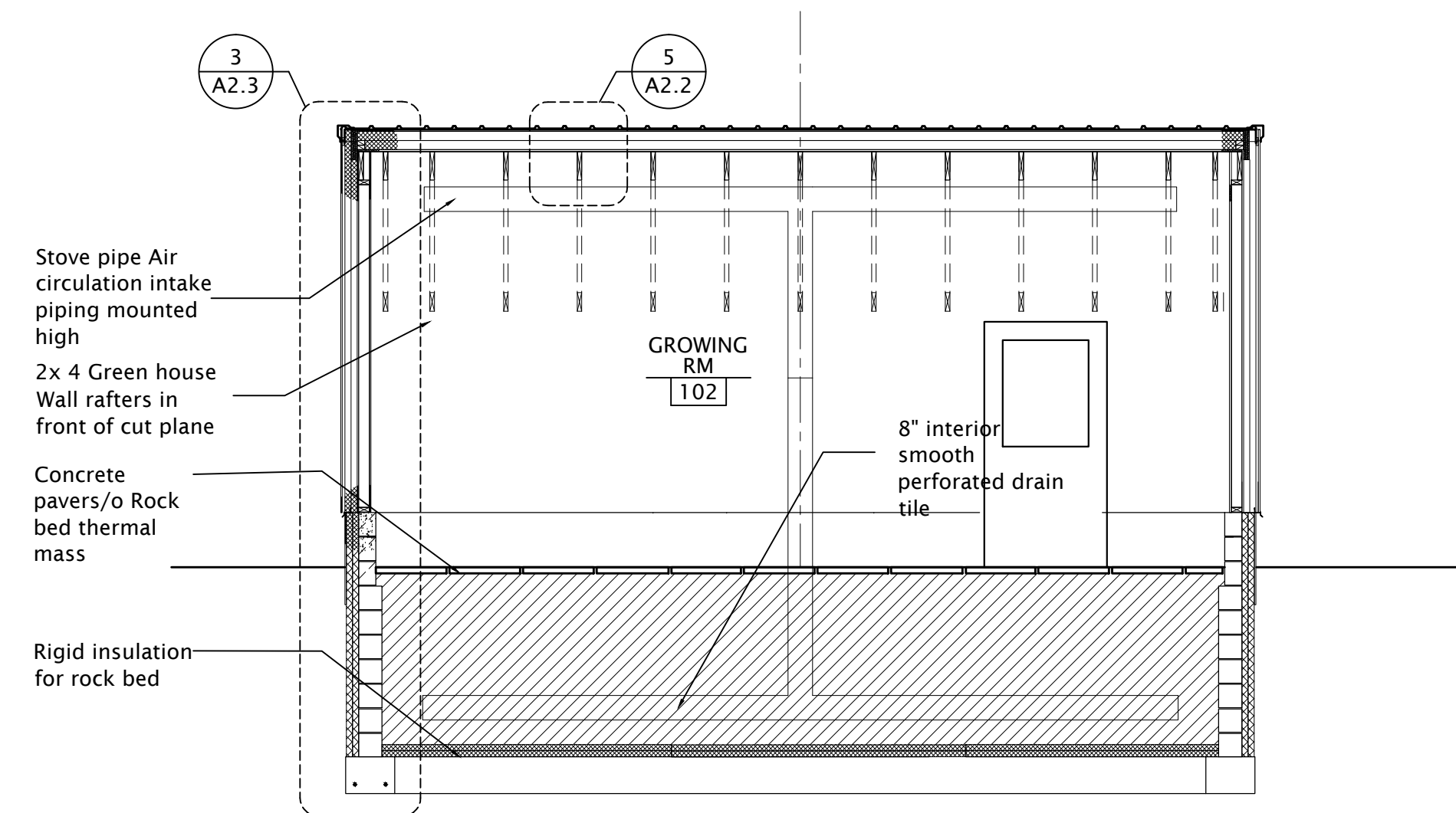
**4 FOUNDATION and AIR CIRCULATION PLAN**  
 1/4" = 1'-0" Dimensions are from exterior face cmu - UNO.



**3 FLOOR PLAN**  
 1/4" = 1'-0" Dimensions are from exterior face of stud - UNO.



**2 SHORT SECTION**  
 1/4" = 1'-0"



**1 LONG SECTION**  
 1/4" = 1'-0"

17 N. Lake Avenue  
Duluth, MN 55802

(218) 733-0690

www.wagnerzaun.com

dzaun@wagnerzaun.com  
rwagner@wagnerzaun.com

### STRUCTURAL ENGINEER:

Northland Structural Engineers  
102 S. 21st Ave. W., Suite 1  
Duluth, MN 55806  
(218) 727-5995

### CERTIFICATION:

I HEREBY CERTIFY THAT THIS PLAN, SPECIFICATION, OR REPORT WAS PREPARED BY ME OR UNDER MY DIRECT SUPERVISION AND THAT I AM A DULY LICENSED ARCHITECT UNDER THE LAWS OF THE STATE OF MINNESOTA

21630

REGISTRATION #

DOUG ZAUN  
NAME

*D Zaun* X/X/XXXX  
SIGNATURE DATE

IF PRINTED TO SCALE  
THIS LINE WILL BE 2" LONG

PROJECT #: 1517

### West Duluth Deep Winter Greenhouse

N 45th Ave West and Grand Avenue  
Duluth, Minnesota

REVISION/ISSUE	DATE
ISSUE	DATE
ISSUE	DATE

SHEET NAME:  
Floor Plans and Building Sections

SHEET #:

A 2.1